

Interreg



2 Seas Mers Zeeën

SCAPE

European Regional Development Fund



SHAPING CLIMATE CHANGE ADAPTIVE PLACES

SCAPE — Shaping Climate change Adaptive PlacEs

Based on a landscape led approach, SCAPE will develop (innovative) solutions for water management to enhance the resilience of coastal landscapes and tackle/adapt them to the effects of climate change.



“90% of all disasters in the world are related to water”, dixit Henk Ovink (Dutch Special Envoy International Water Affairs) on hurricane Harvey and the current devastating floods in Asia.



SUMMARY

De opwarming van de aarde heeft gevolgen van orkaan Harvey erger gemaakt

Van de orkaan Harvey zo groot zouden zijn, ren geschreven. De opwarming van de aarde niet veroorzaakt, maar wel de gevolgen erger gemaakt. Stijn Vercruysse legt uit.

Deadly heatwave 'Lucifer' hits Europe

AFP



Human contribution to more-intense precipitation extremes

Seung-Ki Min, Xuebin Zhang, Francis W. Zwiers & Gabriele C. Hegerl

Scientists meanwhile warned that deaths due to extreme weather in Europe could increase 50-fold from an estimated 3,000 per year recently to 152,000 by the end of this century - if global warming is not reined in. [rennie413/Flickr]

SHAPING CLIMATE CHANGE ADAPTIVE PLACES





- Facts & Figures
- Pilots
- Challenges & Objectives
- Method
- LLD in practice
- Outputs
- Project Status
- Q&A

- Water-related effects of climate change
- Sensitivity of coastal landscapes (to water-related effects of climate change)
- ‘Overpaved’ cities vs. infiltration
- Conventional (water management) measures do not take landscape specific characteristics into account.

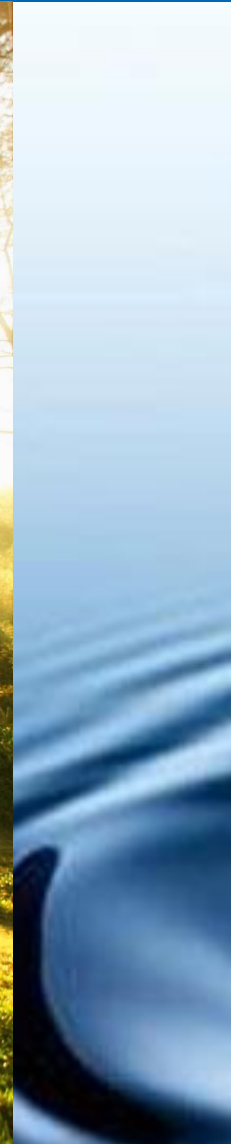


- Water-related effects of climate change
- Cross-border solutions are needed

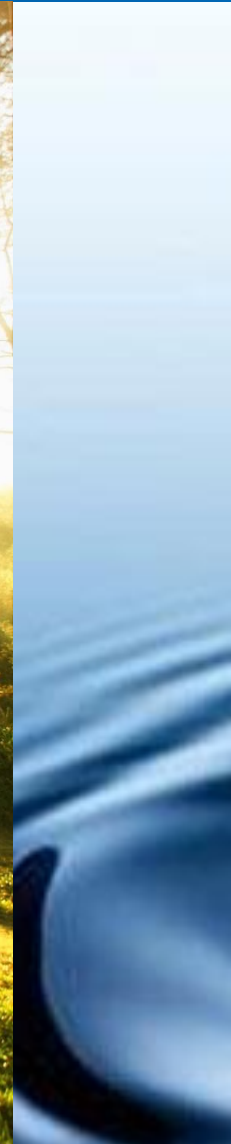


Climate change does not respect border. It does not respect who you are - rich and poor, small and big. Sustainable development offers the best chance to adjust our course.

Ban Ki-moon, 8th Secretary-General of the United Nations



- Water-related effects of climate change
- Cross-border solutions are needed
- Sensitivity of coastal landscapes (to water-related effects of climate change)
- 'Overpaved' cities vs. infiltration
- Conventional (water management) measures do not take landscape specific characteristics into account.





Adaptation to
Climate Change

PRIORITY AXIS

ADAPTATION TO CLIMATE CHANGE

LEAD PARTNER

CITY OF OSTEND

CO-FINANCING &
CONTRIBUTIONS



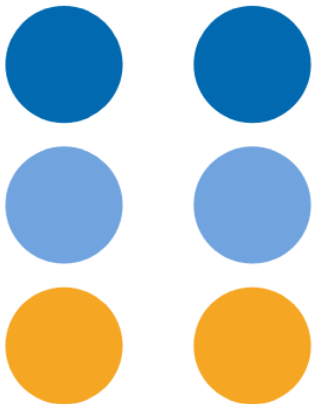
- ERDF (60%)
- Public contribution (40%)
- Private contribution (0%)

8 PARTNERS



- Ostend
- FARYS
- Prov. West-Flanders
- Flemish Environment Agency
- Kent County Council
- Brighton & Hove City Council
- Middelburg
- Waterboard Scheldestromen

6 PILOT SITES



- East Bank (Victorialaan) Ostend (16.67%)
- Patcham + Norton Road (16.67%)
- Gardens of Stene Ostend (16.67%)
- Essenvelt Middelburg (16.67%)
- Zwin Knokke (16.67%)
- Darent Valley Kent (16.67%)

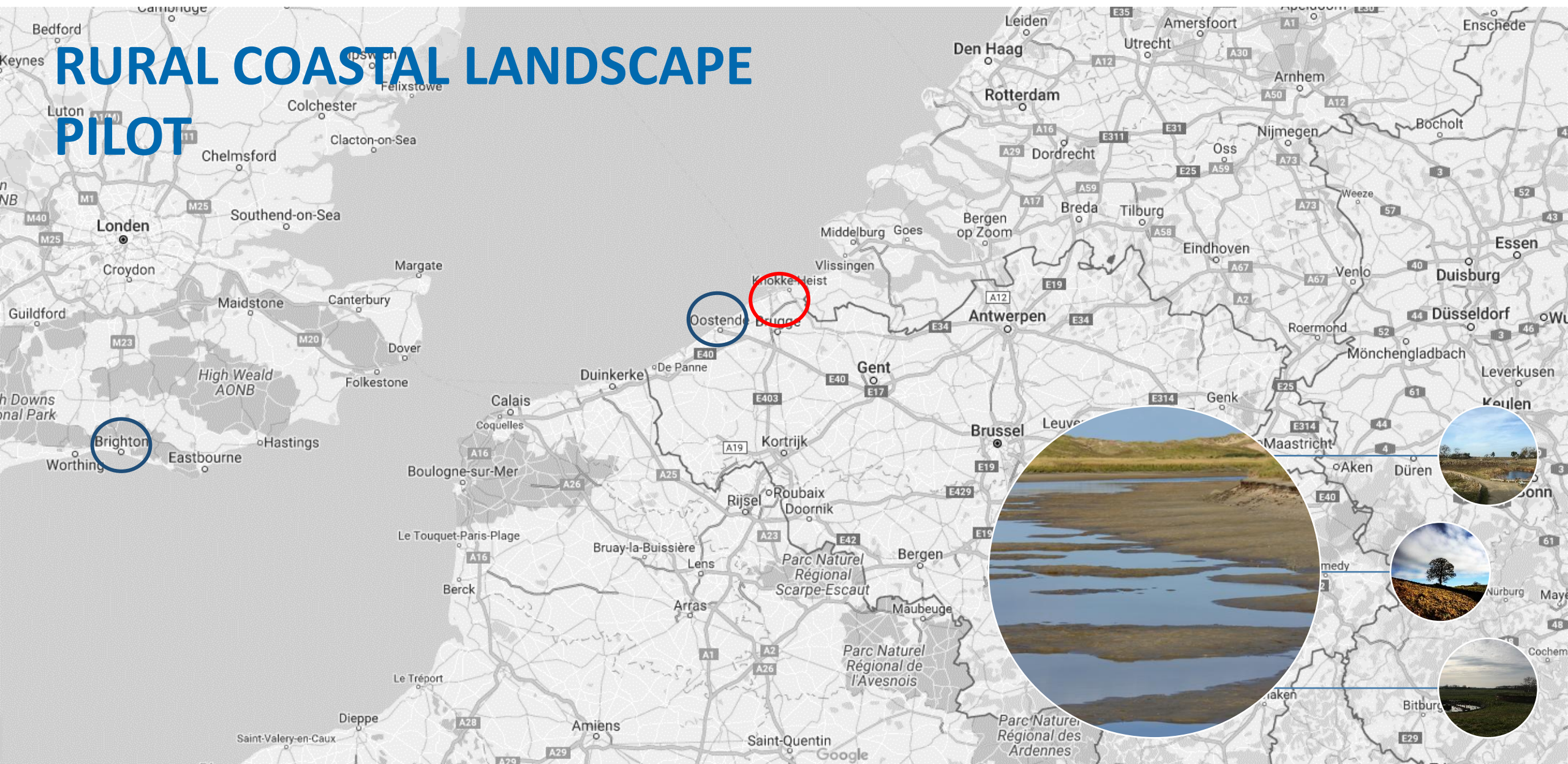
URBAN COASTAL LANDSCAPE PILOT



URBAN COASTAL LANDSCAPE PILOT



RURAL COASTAL LANDSCAPE PILOT



RURAL COASTAL LANDSCAPE PILOT



- Landscape Led Design (LLD)
 - European Landscape Convention (ELC – Council of Europe, 2000, 2008)

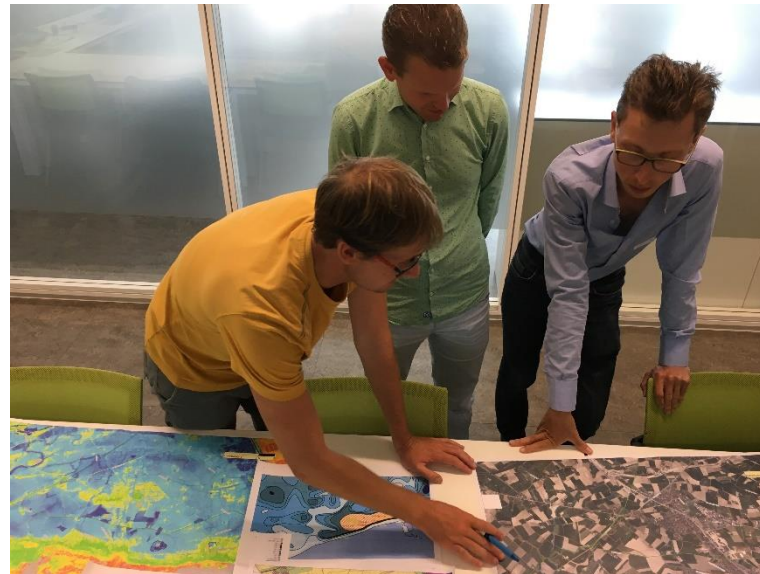


“Landscape’ means an area, as perceived by people, whose character is the result of the action and interaction of natural and/or human factors.”

The aim (art. 3) of the landscape sets to promote protection, management and planning of the landscape (art. 4-6) and do this in a European co-operation (art. 7-11).

1. Landscape Led Design (LLD)
2. Analysis of the different policies in use (in the 2 Seas area)

1. Landscape Led Design (LLD)
2. Analysis of the different policies in use (in the 2 Seas area)
3. Climate Test(s) for all pilots

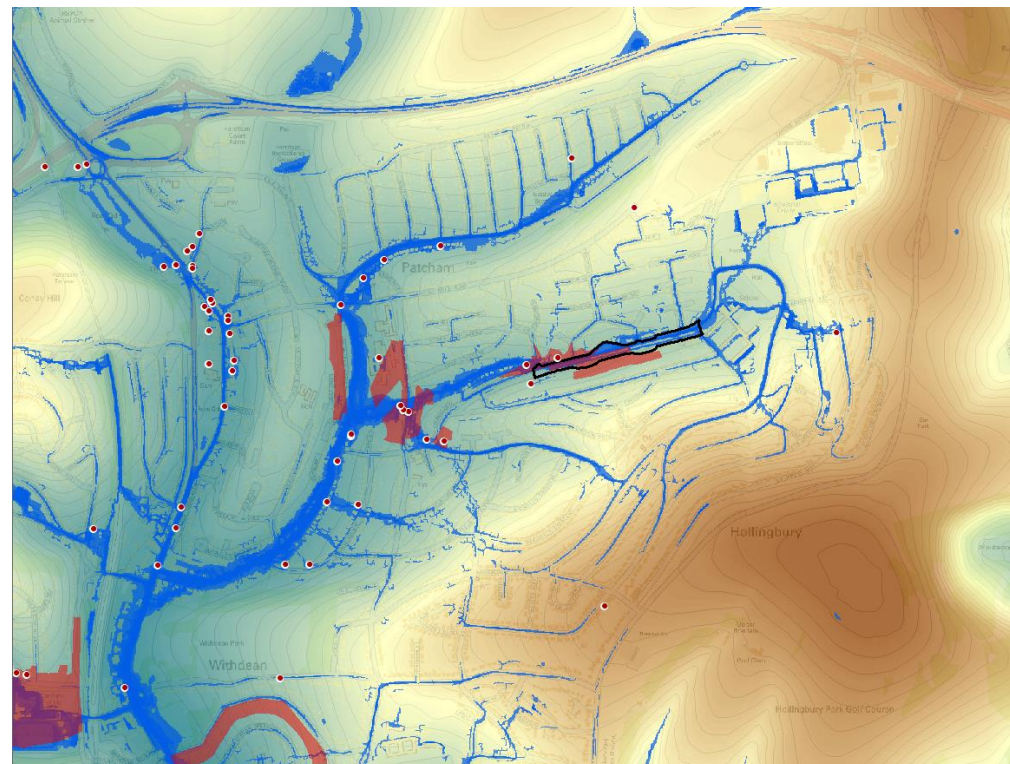
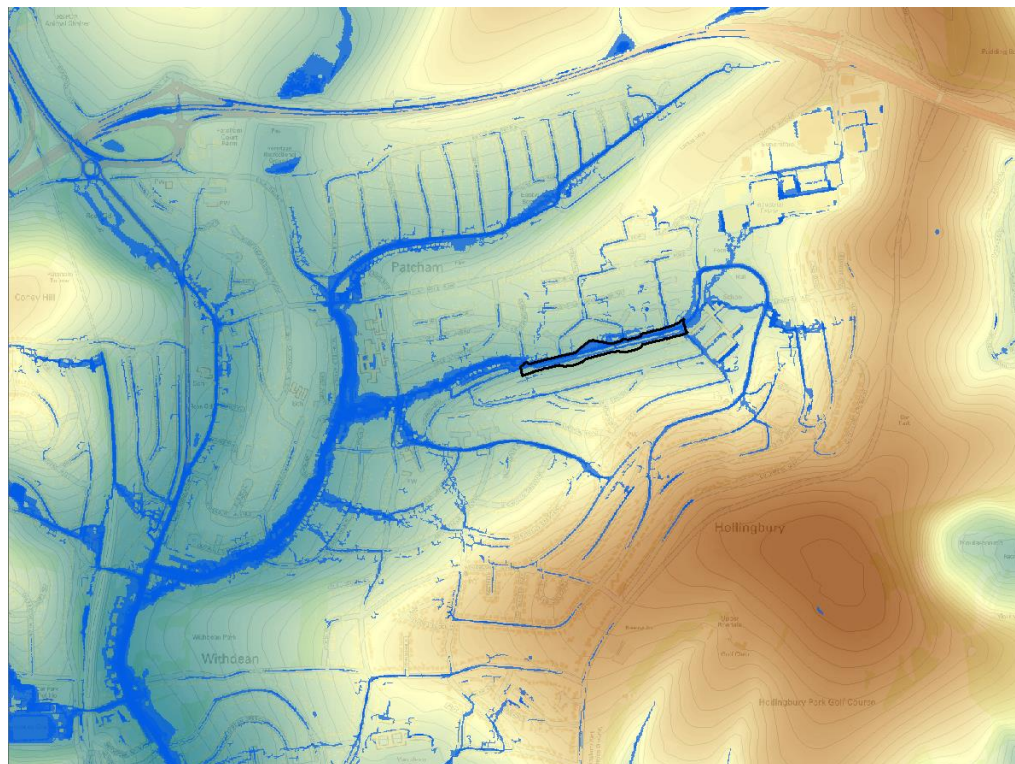


1. Landscape Led Design (LLD)
2. Analysis of the different policies in use (in the 2 Seas area)
3. Climate Test(s) for all pilots
4. Test innovative tools and solutions to enhance the resilience of the sites

Pilot 2 | Patcham & Norton Road – Brighton & Hove (UK)

- Aim to improve water quality, provide flood risk management and improve public spaces
 - Creation of reedbeds, rain gardens,...
 - Reduce risk of street level flooding
 - Remove pollutants





Patcham pilot surface flooding flow paths and
flooding incidents (oct. 2014)

LLD IN PRACTICE

Challenges

Facts & Figures

Pilots

How? Method?

LLD in practice

Output

Status

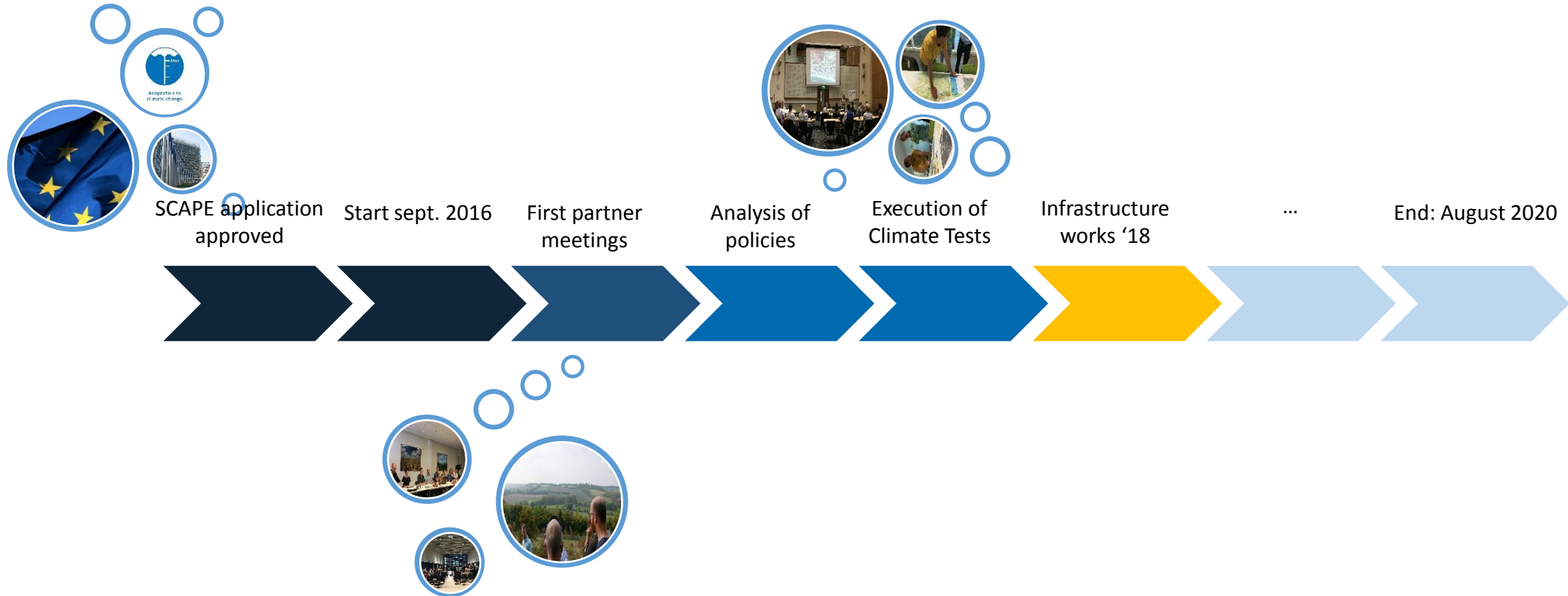
Q&A



- 1 LLD strategy – Incorporation of LLD solutions in water management
- 1 LLD Method – Provide LLD guideliness for partners and target groups
- 6 pilots to validate the use of LLD in 3 kind of landscapes

PROJECT STATUS

Sept. 2016 – Aug. 2020



QUESTIONS?





What if it's [Climate Change] all a big hoax and we've created a better world for nothing?

Naomi Klein, Author and social activist

Arne Debruyne

Coordinator SCAPE

City of Ostend – *Strategy & Management*



arne.debruyne@oostende.be



[@EUSCAPE](#)



www.scape-interreg.eu